



Twentepad

a route-guide in English

I G Liddell



Introduction

The Twentepad is a circular route through the gently rolling countryside of Twente: the three main towns passed through are Almelo, Oldenzaal and Ootmarsum, in the west, east, and north respectively. Tubbergen (north-west) and Hertme (south) make up the principal set of natural break-points on the route.

The route is a *streekpad*: this indicates that the path is tied to a region. The standard streekpad waymarking is yellow and red (as seen on the front cover of this document).

Walkers on the Twentepad are very fortunate, in that the 64 bus service, which links Oldenzaal with Ootmarsum, Tubbergen, Mariaparochie and Almelo, gives the walker the opportunity of establishing a base at one of these points (probably Ootmarsum or Oldenzaal). The southern flank is slightly trickier, though a break at Hertme is not insurmountable. The national public transport site (<https://9292.nl/>) is comprehensive and excellent, and the walker is urged to buy a national public-transport smartcard, the *OV-Chipkaart*, to get around. All buses, trains and other public transport facilities are covered by the card.

The route-guide here is described anti-clockwise, because that's the way I walked it. It starts and finishes in Almelo (as does the official guide in Dutch, with clockwise and anticlockwise descriptions), though I actually started at Tubbergen: this gave me an afternoon's leg-stretching after the drive from London that morning. The section numbers in red below refer to the map numbering in the official guide (*Twentepad*, Fourth edition, 2006), published by Wandelplatform-LAW (ISBN 9789071068676).

Within the text below, this volume is referred to simply as "the guide-book". Note that the flow of the guide-book is for a clockwise perambulation from Almelo, so the map numbering counts down in this document. Note also the convention, borrowed from the guide-book, of using the letter P (for *Paddestoel* — mushroom) to denote the numbered ankle-level red-and-white signposts, which look like squared-off mushrooms. These structures are

placed in the landscape by ANWB, the Dutch motorists' association, primarily for the benefit of cyclists. Where there is a numbered junction without a paddestoel, this attracts a letter Y in the text.

From Almelo, the route makes its way across the flatlands to Hertme. After this little town, a few contour lines begin to make their way under the walker's feet, and the tiny hills of Het Hulsbeek herald the arrival into Oldenzaal. From here, the countryside rolls along until the River Dinkel is followed, the south-eastern approach to Ootmarsum returning to flatter walking.

Paddestoel 23786



The section between Ootmarsum and Tubbergen is the hilliest, with high-quality walking, particularly in the border area of Springendal. The approach to Tubbergen is bejewelled with the two huge *Mandercirkels*, relics of an experiment in land management: this agronomic curiosity was another factor in my choice of start-point and direction, since it was left till the end of the walk.

Opportunities for refreshment en route are limited, other than in the towns mentioned above, though the excellent café by the mill at Singraven must be recommended, the food and surroundings making for a perfect rest-point.

The total distance for the Twentepad runs out at 95km, though with slight detours, you are likely to clock up 100km. That total includes walking both ways on the Almelo spur, which links the circuit proper with Almelo station.



64 bus in Tubbergen



Almelo's industrial history: the counting-house remains as a restaurant

Arms and gazetting of the Count of Almelo, on the moat wall of Huize Almelo



1

Almelo spur (outbound) 2.91km

Descend the steps at the east end of the platform, and turn left to go under the track. At the end of the tunnel, turn right and ascend the stairway to street level. Turn left to walk across Stationsplein away from the railway: Carry straight on along Egbert Gorterstraat, passing the Twenthe Centrum on your right.

Almelo was established in the fourteenth century, and by the time of the industrial revolution in the Netherlands, it was a flourishing textile town. The coal to power the looms was brought from Germany, and the Kanaal Almelo-Nordhorn was dug to facilitate the coal imports. In common with many textile-producing areas in northern Europe (the towns to the north of Manchester, for instance), Almelo began to decline in its major industries: along with the usual slew of service industries, the major new source of economic prosperity in the area is in uranium enrichment.

Turn right at the first junction (Haven Noord Zijde), passing the prominent preserved factory chimney and gatehouse on your right. Continue straight on into the pedestrian zone where the main road swings left, passing on your right the building with a huge poppy feature on its spiral staircase, to reach Centrumplein.

Bear slightly right to cross Centrumplein to the middle of the far side, where a lane leads between shops to reach Grotestraat, a main shopping thoroughfare. Turn right along Grotestraat to reach another square at Oude Radhuis (now Het Wetshuys tavern).

Bear half-left across the square, then left along Koornmarkt. You will see an avenue of trees some way ahead. Walk to the end of the pedestrian zone, just before the trees.

If you have already walked round the north side of Huize Almelo (perhaps on your way into Almelo), the south side of the local Gravenallee route (straight on from the end of Koornmarkt) will take you more directly to the major road crossing, past (on your left) an ornamental lake and a deer enclosure.

Turn left onto a route with zigzags (Het Kolkje), heading for Kerkplein. Keep the church on your right hand, turning right along its north side, and continuing along Herengracht (a footpath with a row of small houses on your left, and a watercourse on your right).

At the end of the row of houses (at Y 16204 2), bear right, keeping the watercourse (and now the wall

surrounding Huize Almelo) on the right. Where the wall and watercourse turn right, follow the path in that direction, past the gates to Huize Almelo and, at Y 16122, straight on via a brick path to the road at the end.

Here turn left to the major road; cross to its far side at the lights, and turn left. Follow the footway for about 200m, past a small car park, to reach Gravenallee, the arrow-straight approach to Huize Almelo (now directly across the major road from you). Turn right onto Gravenallee, now leaving Almelo behind you. After about 400m, cross a small bridge over a canal and, level with P 21484, you reach the end of the Almelo spur. Here begins the Twentepad circuit.

You have a choice here. If you want to go clockwise along Twentepad via Tubbergen and Ootmarsum, your route lies straight ahead. Should you decide to take Twentepad anticlockwise, via Saasveld and Oldenzaal, you will turn right to follow the Lateraalkanaal, initially on your right.

20

Gravenalleebrug to Oude Bornse Beek 3.88km

Having turned to the right off Gravenallee at P 21484 (after crossing Gravenalleebrug, follow the Lateraalkanaal (with the water on your right) in an easterly direction. After about 1km, cross an asphalt road and carry straight on, keeping the canal on your right. At a weir, continue straight on, the path surface changing from sand to grass. After a further 2.5km, this path reaches a bridge. Turn right and cross the bridge.

19

Oude Bornse Beek to Hertme 4.14km

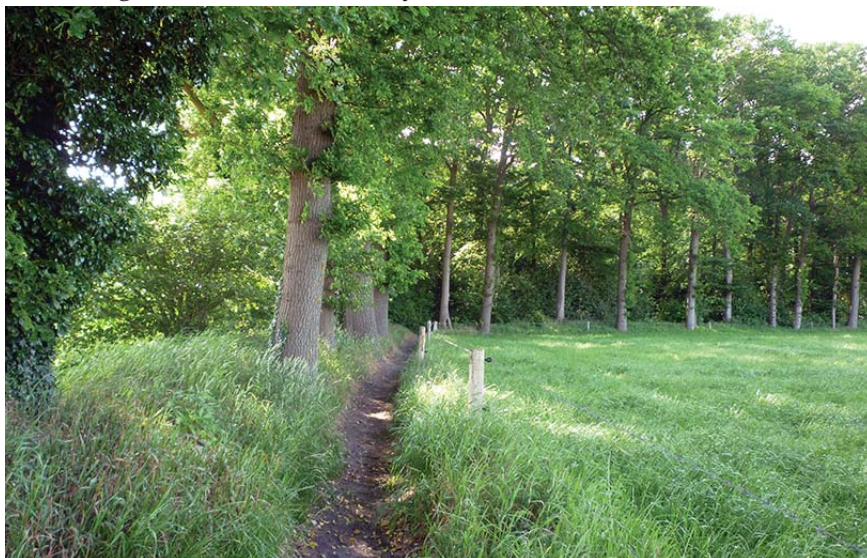
After crossing the bridge, turn immediately to the left to follow the Lateraalkanaal, the water now on your left. The path sweeps round to the right to follow a feeder canal: when you reach the asphalt road, turn left, cross the bridge, and immediately turn right along a grass path, with the water (Oude Bornse Beek) now on your right.

Where the grass path comes out onto a sandy track, continue straight ahead. You will see a cascade-weir with a fish-ladder: bend to the right here to keep the water close by on your right, until you emerge onto an asphalt road (Oude Postweg). Turn left along the road. After 30m, you will see on your left a water authority information board; a further 50m ahead, turn right through a wooden gate.

At first, this path follows a line of trees, and then goes through woodland. Exit the woodland through a gate on your left, then turn right onto the asphalt road (Hedeveldsweg).

Just before a bridge, turn left. Follow the water (now on your right) upstream. After about 150m, the path zigzags left and

*On the Loolee path between
the Lateraalkanaal and the
Oude Bornse Beek*





Agricultural life preserved in Hertme: the stable is used for local children's nativity plays during Advent

18

right, now joining the road which leads to the open-air theatre.

Continue past the theatre (on your left) to the church (on your right). Turn left to cut across the car park (with its old agricultural buildings on your left), then exit by a path about half-way along the parking spaces to reach Hertmerweg.

Note that, after an area of farmland has now been given over to housing, the exit from Hertme now differs (necessarily) from the route as mapped in the guide-book.

Hertme to Saasveld 5.16km

On exiting the car park, turn left along Hertmerweg, and immediately right (at the café called 't Oale Bakkershoes (the last syllable of which is *hoes*, pronounced *hoos*, and has nothing to do with *shoes* (in English): it's *the old baker's house*. This establishment is not to be confused with the Liedenbaum café nearer the church) along Hertmerdwarsweg. Continue the full length of Hertmerdwarsweg to Oude Postweg, where turn right. At P 23787, where Broekweg comes in from the left, the road (now Hertmerweg) bends slightly to the right.

At this point, the mapped route in the guide-book may once more be followed.

About 750m ahead, at P 20068, the route turns right and immediately left, continuing along Hertmerweg. This road becomes a sandy track, and leads to a café called Het Möll'nven.

Het Molenveen



Turn right, cross the main road (Bornsestraat), and turn right again to follow a grass path alongside the lake (Het Molenveen). After passing the end of the lake, the path enters the wood to skirt the lakeside (more or less) for about 500m, finally veering right, away from the lake, to reach Molenveenweg.

This woodland path is the route marked on the guide-book map as an "interesting variation", but it has now become the waymarked route. The former route simply follows Bornsestraat and turns left onto Molenveenweg: hardly a recommendable option.

At the end of Molenveenweg, turn half-left onto Lammersboerweg; at the end of this road, half-left again onto Bosvenweg. After about 200m, take the first sandy track on your right, at the end of which, take the asphalt road (Postweg) slightly right of straight ahead, for about 400m. Here, where a farm is on the left immediately adjacent to Postweg, turn left (that is, with the farm now on your right) to follow a sandy track.

Follow the track to its end, opposite the car park for a sports complex. Turn right, then (at P 22319) left, with the car park now to your left. Now go straight ahead into Saasveld. Turn right at P 22318 (at Bruins café), passing the school on your right to reach the entrance to Saasveld church at P 22317.

17 Saasveld to Deurningerstraat 4.87km

From the church entrance at P 22317, bear right then left, following the footpath round the south wall of the churchyard. At P 22342, turn right: at the edge of the wood, turn left, following the south edge of the wood until the path reaches a road at P 22337.

Turn left along the road; at the next crossing (P 22338) go straight ahead onto Darfeldsweg, which becomes a sandy track beyond a farm. At the end of the track, turn right onto the asphalt road. Follow the road for 600m and, just past a small bridge, turn left to follow a small track through the grass immediately adjacent to the water (Gammelkerbeek) on your left.

Beware, as you enter, of a path which veers away from the stream: fortunately, there is a crossed-yellow-and-red sign (which is the standard indication of “wrong way”) painted prominently on a tree a few metres along this path. This part of the path is the wettest 700m on the whole Twentepad. While you are splashing around, look out for signs indicating that you cross two wooden bridges (with no handrails and with nettles on either side) “at your own risk”.

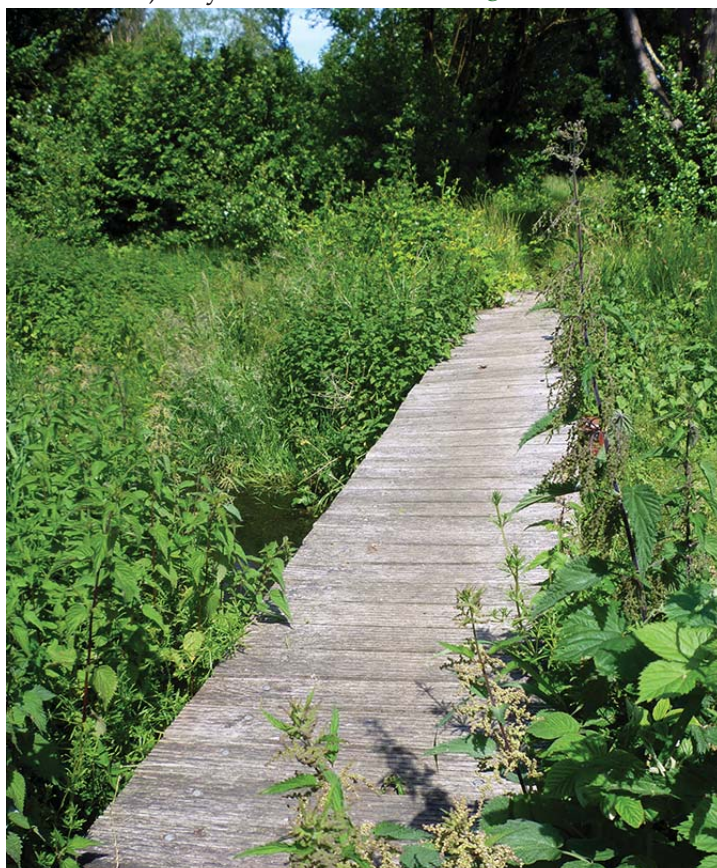
Eventually, the path becomes a sandy track which leads to an asphalt road. Here, turn left and, having crossed the bridge, right, to leave the stream now on your right. You are now on Grootsweg. Follow this way through a few bends, out to the main road, Deurningerstraat.

Note that there is a minor variation from the route mapped in the guide-book here. It takes you one field to the north of the building of the horse-farm. This route is particularly well



*“Proceed at your own risk”,
Gammelkerbeek*

*One of the “own-risk”
bridges, Gammelkerbeek*





Het Hulsbeek from the west

waymarked, and the path is corralled by fences, so the variational route should be obvious to the walker.

16

Deurningerstraat to Hulsbeek 2.88km

Cross the busy Deurningerstraat, and continue straight ahead on Overhoekersweg. Take the first sandy track on the right, Vieckboersweg. Take the left fork (you are still on Vieckboersweg) at a farm. At the next farm (on the right, behind a *No Entry* sign), keep on ahead with the trees immediately on your left for 250m, where you will reach a path crossing. Turn right, and pass through a gate.

Follow this path to a small bridge, where keep to the right. Cross a broad sandy track, then take the next path on the left, into the heathland. At the end of this path, which is also at the border of heathland, turn left to cross the heath. About 20m before the school-hut, turn sharp right. At a T-junction by a gate, go left.

Be careful, because here you cross a path used by all-terrain vehicles. Go through a wooden gate, then go to the right at a T-junction. Cross an asphalt road and an asphalt cycle-path to reach another gate on your right, giving onto a grassy area overlooking the west end of the lake at Het Hulsbeek.

15

Hulsbeek to Oldenzaal 6.05km

Turn right through the gate: by three cycle-racks, the path bends to the right. At a wooden gate with a board marked *P5*, turn left. Cross over an all-terrain vehicle route. Keep to the left at a junction. Go through a gate, and turn left at the end of the path onto an asphalt road. Follow the asphalt path round to the right at a right-angle bend. About 20m beyond the bend, take a sandy track which goes off to your left to reach the lakeside.

Turn right, and follow the lakeside path (that is, with the lake on your left). When you reach a bridge, veer left to cross it, and follow the lakeside path (with the water still on your left), until you reach an asphalt road. Follow

this road to your left, past the large pavilion on your left, and the car park on your right. At the far end of the car park, at a crossing, go left into the woodland and follow the path, broadly parallel to the road.

This path makes its way through an adventure playground before returning, by a right turn, to the Hulsbeek access road. Turn left onto the road, past the karting centre on your left. Where the main road bends to the left, keep straight on until, with a bend to the left, you reach a roundabout. To your right, you will see the signs for the access slips onto the main N342 road.



Marktstraat, Oldenzaal

You have now reached urban Oldenzaal.

Go straight across the dual carriageway on the left of the roundabout, and into Vondellaan ahead. Cross it to follow a path which curves across the front of a commercial building, and then bends to the left to reach a path parallel to the N342. Follow this path.

At a crossing with a cycle-track, turn right to take a tunnel beneath the N342. This leads you into Hyacintstraat: follow it to its end at a T-junction. Turn right into Turfstraat, and then take the next left into Deurningerstraat. At the crossing with Vestingstraat, go straight ahead: at the end, take a right-and-left (still actually in Deurningerstraat), aiming unerringly for the square tower of St Plechelmus church.

Ganzemarkt and St Plechelmus, Oldenzaal

Oldenzaal is a place with a history, being connected to the Hanseatic League as a sister city of League member Deventer. It has long held markets, and its location near the German border has given it joys and sorrows down the ages. Today, the recreation parks of Hulsbeek and Kalheupink cater for outdoor leisure, while the indoors is served by museums, music, and a strong sense of a café society.

Beyond the church, bear round to the left into Kerkstraat to reach the corner of the old market square, which is ringed by cafés and restaurants. Here, go right into Marktstraat (or, if you have been busy slaking hunger or thirst, return to this point and go into Marktstraat), away from the market square. At the end of Marktstraat, in front of the (smaller) Hofkerk, turn right. Take the second road on the left, Wilhelminastraat.





*Sculptures of a former life:
site of a corset factory on
Wilhelminastraat, Oldenzaal*

Follow Wilhelminastraat to its far end, at the junction with Haerstraat.

At this point, Twentepad turns left along Haerstraat.

For the bus and railway stations, turn right along Haerstraat and, after crossing the cycle-way in its underpass, turn left.

14

Oldenzaal to Duivendal 5.97km

Signpost, Kalheupinklaan

If you are coming from the railway station, follow the road (Stationsplein) away from the railway, take the first road on the right onto Haerstraat, and walk to the junction with Wilhelminastraat.



The Twentepad leaves central Oldenzaal along Haerstraat (turn to the left if you are coming out of Wilhelminastraat, or go straight on if you are coming from the train or bus).

Walk for about 600m until there is a crossroads (Kalheupinklaan is to your left). The crossroads is adorned with a multi-fingerpost, detailing the routes for the Marskramerpad, the Overijssels Havezatenpad, and (of course) the Twentepad.

Note that here, the route described in the guide-book is out of date.

Follow the route indicated by the Twentepad finger up through woodland, bearing gradually right and eventually ending up in a park. Follow the waymarks across the park until you have a pond ahead on your right, with a little pagoda at the waterside. Here, bear left over the brow of the hill, gradually turning left on the far downslope till you are contouring westwards towards Kalheupinklaan (the traffic

noise from the road should help you in your orientation), then turn almost back on yourself (to the right), so that you are going in a north-easterly direction along a lane parallel to the northern boundary of the park.

Follow this lane as it bends gradually to the right (another lane will join coming up from the left: by this point, you will have rejoined the route as described in the guide-book) until it reaches an asphalt road, where turn left. Turn

right into Daminksweg, and 300m farther on, at the gate to the Damink estate, turn right to enter woodland.



Damink house and garden

The path is by no means straight, but is obvious. It emerges from the wood to give a fine view of the south flank of Damink and its topiary, up to the left. Then, at the next woodland, it passes along the edge of the wood (trees on the right), now a sandy track. This track leads up to the busy N735 road.

Cross the N735, and follow the asphalt road half-right for about 150m, before bearing right off the road onto a path through the woods. Cross a meadow, then follow the path at the rim of the wood, reaching an asphalt road, where turn left. This leads towards the cluster of buildings that is 't Middelkamp.

Among the buildings here, camping facilities are available, and there are possibilities for a sheltered rest (most possibly at times of extreme weather). There may even be the chance of a cup of coffee, with an honesty-box arrangement for payment.

Bear right to pass between the two rightmost buildings onto a straight track with woodland on your right. Near the end of this path, where it runs between two woods, take a right-angled turn to the right along a path, at the end of which, turn left. Follow the fieldside path out to the road.

't Middelkamp

Turn right onto the road, then immediately (at the little Mariakapelle) turn left onto Paasbergweg. At the farm, turn right, then left after 50m.

Note: for the remainder of this section, the walking route as mapped in the guide-book is out of date.

Continue along this path, passing a brake of trees on your right: at the next piece of woodland, your route bears left then right, keeping to the field edge with the trees on your right. At the end of





Hakenberg

the woodland, the path continues to a hard-surfaced road.

The blazes for the Noaberpap, in red and white as befits a *Lange Afstand Wandelweg* (the equivalent of a National Trail in England and Wales), takes that route off to the left: the Twentepad turns right.

After about 350m, with a long entrance driveway to a house on the left, this section ends.

The Noaberpap (after the local dialect word for “neighbour”) plays hopscotch with the German border all the way from the most north-easterly town in the country, Bad Nieuweschans, to the city of Kleve in the valley of the Rijn (or the Rhein, or the Rhin, or the Rhine), in Germany.

13

Duivendal to Kampbrug Dinkel 4.76km

Note: at this point, the route mapped in the guide-book is rejoined.

Continue on the asphalt road as it breasts a small rise, giving extensive views across the Dinkel valley and into Germany. Descend, bending through Hoge Kavik farm to reach a T-junction. Turn left to follow Populierendijk. Just beyond buildings on your right, the road swings away left.

Here, the Twentepad continues straight on for about 50m, then turns sharp right, making for the corner of a wood. Enter the wood, and follow the path, which veers to the right and comes out to a T-junction. Turn right here, then keep on the path, taking the left-hand option at a fork near the lake. Cross the outflow stream from the lake, and continue, bearing slightly leftward. You will see a fine house (Hakenberg) up to your left. The path eventually comes out onto a lane (Hakenbergweg): turn right.

*The river flows slowly near
Kampbrug Dinkel*



Bear left to keep a building on your right: after this, the route zigzags, becoming a track, then a footpath, coming out onto Veldweg by a farm. Turn right along Veldweg for about 500m, then take the first road on the left (Achtermaatsweg) past a farm on your right-hand side, then another on your left.

When you reach the T-junction with Nijenhaerweg, continue straight ahead, now passing along Achtermaatsweg, which has become a sandy track. At the end of the track, the route of the Twentepad turns to the right onto Paandersdijk.

Follow the asphalt road for 1km, crossing Beuningerstraet (where the road name becomes Beuningerveldweg), to reach and cross a bridge over the river: this is the bridge known as Kampbrug Dinkel.

12 Kampbrug Dinkel to Singraven 5.05km

Once over the bridge, turn left, then immediately right to follow a footpath through the trees. After passing a house, the path returns to the riverside, and follows it closely (on your left). At a fork, bear left onto a small dike, continuing along this until farmland (a tree nursery) borders the path.

Cross the farmland, and bear right inside the edge of a wood. Ignore a bridge over the river (with an old cannon on the far side), and continue to an asphalt road (with a large stone sculpture, representing a pair of dogs, on your left). Turn left along the road, across the river, and into Beuningen.



Honds, Beuningen

Turn right in the middle of the village, and continue for 250m as the road bends to the left. Take a lane to the right, making towards the river. At the corner of a wood (Sterrebos), turn left. Bear immediately right to follow the river Dinkel (on your right) round a loop, bearing left to keep parallel to the main road.

Follow the signs to cross the road, then continue along Borgbosweg for about 700m, where there is a right fork. Take this track, which then becomes a footpath and passes to the right of the buildings of Hoog Ende.

Cross the Dinkel by a bridge, then bear left to continue out to a road. Turn left onto the road (Molendijk), to reach the entrance avenue (Kasteellaan) to Singraven country house.



Singraven house and café

11 Singraven to Huneborg 4.08km

From the Singraven gates at the end of Kasteellaan, continue (with the house on your left) on Schiphorstdijk, past the estate watermill.

Here, there is a very welcome café/restaurant and a little shop. You may buy your entrance tickets to the estate at the shop, should you decide to stray off the Twentepad for a short time.

Keep straight on along Schiphorstdijk for 800m beyond the shop to a bridge over the Dinkel (at P 22240). Here, take the sandy track (Linderdijk) forward to the left of the





Singraven watermill

woodland. After about 500m, just before a small bridge, take the path on your right, with the water (Voltherbeek) on your left. Keep to the side of the water for about 1.4km to reach the Kanaal Almelo-Nordhorn.

The Kanaal Almelo-Nordhorn is described in the description within this document at Almelo.

Turn left along the canalside to a lifting bridge. Cross the bridge, and turn left to continue along the other bank of the canal.

After about 200m, bear right by a little path, down off the canal dike: turn right at the bottom of the slope. After about 100m, turn left at an interpretive signboard, and step into Huneborg.

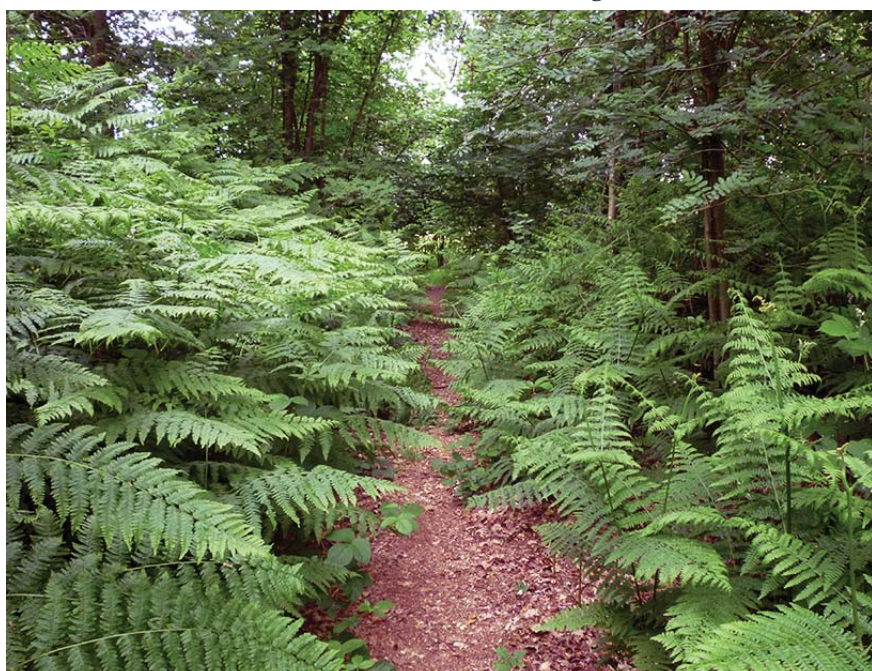
10

Huneborg to Ootmarsum 5.15km

Hunenborg takes its name from the Huns, and local legend has seen the potential of maintaining a link with Attila's infamous guys., right down to the obligatory secret tunnel, this one being used to smuggle silver out of Oud Ootmarsum — a distance of about 4km — and into the ringwork. Of course, there is not a whit of truth in Hunnish links like this. Huneborg is a stockade of the eleventh or twelfth century, in which the locals and their beasts took refuge at times of emergency.

The path continues through the middle of Huneborg, bending slightly to the right in the centre of the ringwork, and leaving by a gate. Now go straight ahead across the grass towards the farmstead ahead. Keeping the buildings on your right, follow the entrance drive out to the road (Broekmatenweg).

The path makes its way across the Huneborg



Here, the guide-book map has a "proposed route" which turns left. This route is not yet passable, so follow the original route.

Turn right onto Broekmatenweg, and follow it for about 500m, round a left-hand bend. Where the road makes a slight turn to the right, turn left onto a sandy track (Agelerbroekweg). After about 400m (just after the track makes a slight bend to the left, turn right onto a footpath which runs with Tilligterbeek on your left. Follow this footpath beside the stream until a road is reached next to a bridge.

Turn left, cross the bridge, and immediately (at P 66275), right onto Kooiweg. After 100m, turn left onto Witstaartweg. Follow this to its end at a four-way junction, and go straight ahead into Alleeweg.

You have now reached the suburbs of Ootmarsum.

Follow Alleeweg round to the left: a sports complex is now on your right. Keep going straight ahead through the modern residential area: at the end of Alleeweg's asphalt, at the junction with Wildehof (on your right) and Berend Vinckenstraat (on your left), go straight ahead onto a path between two lines of trees, passing two lakes on your right. Keep going straight ahead, ignoring a small (and old) lane leading down to the right.

Just before Alleeweg ends in a dead end, turn right onto Oldenzaalsvoetpad, the suburban street making a bee-line for the church tower in the distance. Continue, passing Commanderiestraat on your left, and crossing the junction with Stobbenkamp (on your left) and Palthestraat (on your right).

Turn right onto Oostwal, then first left into Walstraat. Follow Walstraat round to the right, then to the left: at the end, turn left into Keerweer to reach Kerkplein. Bear right, then left (keeping the church on your left) to reach the centre of Ootmarsum at its market square. The VVV (tourist information centre) is down to your right.



Ootmarsum: southern approach and public art;

Ootmarsum has been in place since before the first millennium: a church was founded here in 917. The population is small, but the town's lifeblood has become the artistic endeavours which have grown up in recent years, supplementing the light industry which is practised on an estate to the north of the town centre, and local agriculture. As a result, tourism is gaining in importance in the town.

The revival of traditional crafts in Ootmarsum now extends to brewing: a craft brewery has been turning out a variety of excellent beers since 2001, and is gaining national recognition.





Ootmarsum town centre

The bus stop for the 64 service lies just to the west of the roundabout at the end of Denekamperstraat, to the north-east of the centre of the town.

9

Ootmarsum to Springendalse Bronnen 4.18km

From the market square, with your back to the church, go down the left-hand street in front of you, Markstraat (that is, not Gasthuisstraat immediately adjacent to the VVV) to come out at a crossroads by the Rabobank branch. Go straight ahead into Denekamperstraat, continuing straight ahead where Molenstraat goes off to the left. Take the next left (De Meierij, bearing round to the right).

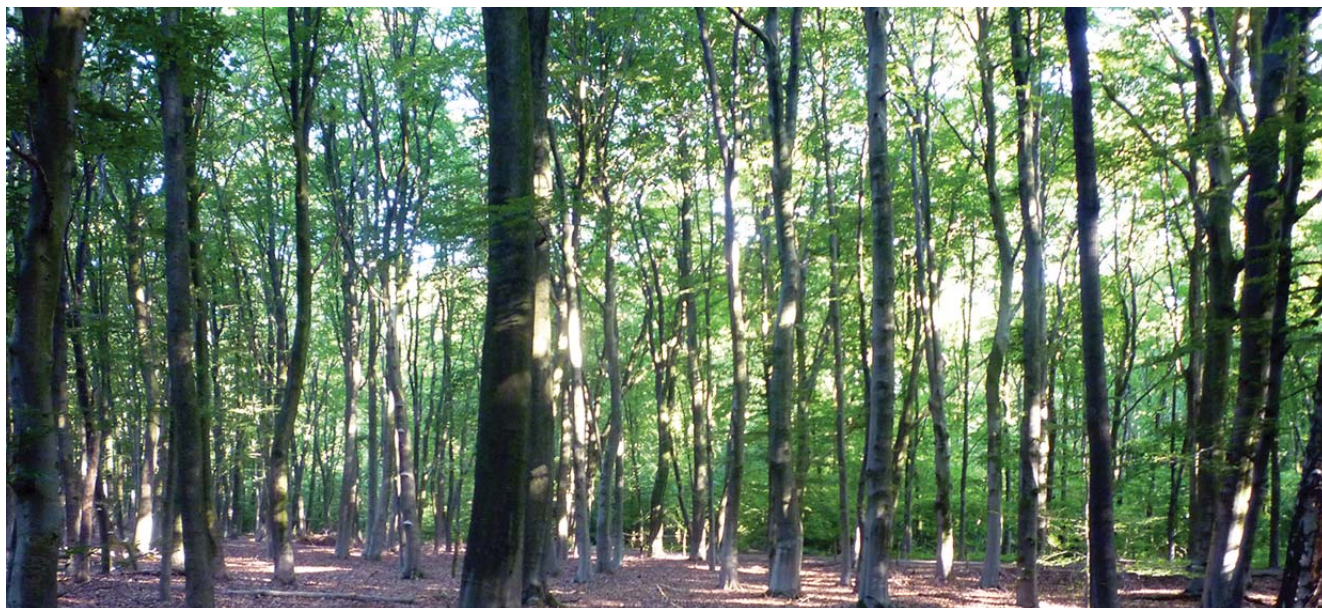
Recent development has overtaken the mapping and description in the guide-book here.

Pass a row of shops and flats on your left, and the big shops of Albert Heijn and Lidl on your right, to emerge onto Rondweg. Cross this busy road, then turn right, and immediately left alongside the entrance ramp to the now-disused tunnel beneath Rondweg. The path (Moerbekkenkamp) passes along the backs of a row of houses to reach the corner of a wood. Here, bear right (not left, as in the guide-book), then left out to Nutterseweg. Turn left onto the asphalt road, passing a farm.

At this point, the mapping and description in the guide-book are rejoined, though there is the possibility of further change in this area.

Follow Nutterseweg for about 500m as it bends gradually to the right: where it turns left, continue straight ahead onto Wittebergweg. Follow this for 400m, and bear slightly right onto Baldersteeg. Follow this to its end,

Springendal



and turn left onto Heuvelweg. After 150m, turn right, with a bank of trees now on your left-hand side.

At this point, you move properly into the Springendal area, which contains its nature reserve. Continue with the trees on your left for 250m, then turn left onto a path through the woods. Where this comes out with farmland ahead, turn left then right, round the edge of the open land. Take a short path on the left near the corner of the field, and on entering the next field, turn right. Keep the woodland on your right along the edge of this field, at the end of which, go left at a path junction within the woodland. At the end of this path, by a gate, turn right along a broad sandy track with cycle-path.



*One of the pools at
Springendalse Bronnen*

Follow this track in a straight line for 350m and, just before it veers to the right (just before a small bridge), turn left onto a path which winds through woodland. Ignore left branches: after you have passed an open area to your right, keep straight ahead until you meet a broader track, which you follow straight ahead (westwards). Continue until a smaller path leads off to the right: follow it as it itself curls to the right, leading past the short end of some open land on your left, and down to a bridge. Cross the bridge, and then follow the path up to the left to reach the highest of the Springendalse Bronnen (spring-lakes).

8

Springendalse Bronnen to Grenspal 81

3.06km

Grenspal 81

From the spring-lake, continue along the path until, with a corner of some open land on your right, bear slightly left to stay in the woodland (rather than following the long side of the open land). In 400m, you will come to a dog-leg to the right, which leads you to a broad sandy track with a cycle-path.

Turn left on this, then after about 50m, turn right. Keep going straight ahead for about 400m and, just short of the road ahead, turn left onto a small path, which passes some buildings on your left. At the end of this path,





Germany, from Grenspal 81

turn left, then at the edge of the wood, turn right, towards a fire-tower. After about 500m, the path comes out onto an asphalt road (Brandtorenweg), just beyond a toilet block and car park.

Here, turn right onto the road, and at the junction with the road coming in from the right, go through a gate on the right of Vasbeekweg (the continuation of Brandtorenweg) to join a woodland path. Soon, you will see an expanse of heather-clad land to your right: this is Paardenslenkte.

About 50m short of the end of this heath, take a short path to the left to bring you out onto Vasbeekweg. Turn right, and continue along

Vasbeekweg, which is now a broad sandy track, for about 500m.

Just after the path takes a clear bend to the left, you will see Grenspal 81 (a *grenspal* is a boundary stone) on your right. Across the gap, a path leads off to the north-west and into Germany, but the Twentepad route does not cross the border.

7

Grenspal 81 to Grenspal 85–1 7.89km

From Grenspal 81, continue into the wood, bearing slightly to the left (in general terms), going straight over a crossing path. A little over 500m after leaving the grenspal, take a path which turns off left at a right angle: you will soon see open land to your left. At the end of this open land, the path bears to the right, through woodland. At the end of the path, turn right. The path then bends left, and comes to a T-junction at the corner of a field. Turn right here, and about 250m

farther on, turn left with the path. This leads out to an asphalt road (Oosteriksweg).

There now follows the Watermill Loop.

Go straight over to join the sandy track which, after 400m, takes you close to Watermolen van Bels at a corner of a wood. The mill (with a café) is to the right (as per the sign); at this point, the Twentepad takes the left-hand path alongside meadows, at the end of which it brings you out onto Oosteriksweg opposite Watermolen van Frans. Here, turn left and climb the road

Exciseman's lookout



back to the start of the loop.

Continue over the path crossing, and almost immediately strike half-right on a sandy track (now going north-east), then after 300m, bear half-left through a gate to follow a path running northwards through the woods. After 250m, open land is visible on your left; after a further 250m, the path rises onto the end of this open land, to the summit of Galgenberg (69m), with extensive views south and west.



Bridge at Galgenberg

On this northward line, the border with Germany is hard by on the right. In the days before the EU and the single market, there was a significant smuggling business in this area. Look out for a little hut on the left, one of the posts for the excisemen.

When the path has dropped off the north end of the summit (now back in woodland), take the right-hand option at a three-way junction (*i.e.*, do not go due westwards). After almost 400m, opposite Grenspal 84, take a path off to the left. Keep straight ahead at a three-way path junction and cross a small stream by a bridge. Climb out of the small valley, and go left at a path junction.

Over to the right (across the border) you will see a German sand quarry. Do not drift right to follow the edge of the quarry, but keep going westwards. After about 200m (just past the end of an open area which you will see on your left), you will arrive at Grenspal 85 1 at a meeting with a cross-track.

6

Grenspal 85–1 to Veendijk 6.35km

*Perimeter path of the eastern
Mandelcirkel*

Continue straight ahead at Grenspal 85 1: after a little over 100m, open land will be visible to your left. After about 700m, the path takes a clear swing to the left, now in a generally southerly direction. More open land is now on your left, with a small tumulus prominent. A broad sandy track crosses at the end of the open land: turn right onto it.

About 100m ahead, turn half-right along an avenue of beech trees to reach a road (Uelserweg) at the far end.

Turn left, then right to cross the road and enter the woodland opposite. This is the Noordelijke





Grenspaal 87, looking into the eastern Mandercirkel

Manderheide nature reserve. After only 25m, turn right onto a path, keeping an information panel on your left: the panel (if you can read its bleached text) describes the Mandercirkels.

These two circular fields, not returning to nature, are the result of an agronomic experiment, to see whether it would be more efficient to plough and manage land in circles, rather than in straight lines. A few such operations are still running in Nebraska and neighbouring states in the mid-west of the United States of America, but the idea did not produce the benefits in the Dutch experiment.

Here, the resulting circles are slightly higher at their centres than at the edges, and the western circle has a spiral path to the summit, but otherwise, they are being reclaimed by scrub, and even the sheep graze no more. They are probably best viewed on a satellite-view map.

Birch-invaded scrubland soon becomes apparent on your left: this covers the larger of the two Mandercirkels. About 250m after passing the information panel, turn left to reach the circle at its easternmost point, then turn right to follow the perimeter for about 300m to its northernmost point. Here, turn right to find Grenspaal 87.

Turn left to follow a track parallel to, but just outside, the circle: after about 120m it begins to veer away from the circle, through an area of tall juniper bushes (trees, really). After about 350m of crossing this heath, the path reaches the northernmost point of the smaller Mandercirkel.

The path does not enter within the perimeter, but remains near the edge inside the woodland. Carry on, ignoring a path which strikes off due west (right) at the circle's westernmost point.

About 250m beyond this point, with the path facing south-east and a view of open heathland in front, bear right to follow the path as it leaves the circle, eventually wheeling to the right. Pass by a gate, and in about 100m, the path meets a broad sandy track with a cycle-path.

Continue straight ahead on this track (Drieschichtsweg, becoming Oude Uelserdijk at the Broekdijk crossing). Continue over Broekdijk and on for 400m, then turn sharp left onto Plasdijk. After 80m, turn sharp right onto a sandy track, with farm buildings on your left. When this path comes out onto a concrete and brick lane, follow it to the left, passing between farm buildings.

About 100m beyond the bend in the road, turn right onto a path which lies just inside a copse, parallel to a small stream. Where this comes out onto a sandy track, turn left (east of south), then right onto another sandy track. You will pass an elevated dovecote on your right, then the fine house whose photograph adorns the guide-book cover.

This house is a fine example of vernacular architecture overlaid with middle-class elegance: it is no surprise that it graces the guide-book cover. But it has a curiosity on its postbox at the gate. Look carefully, and you will see a coat of arms. The bent cross at the top is a clear giveaway: this is the coat of arms of Hungary, whose holy crown was damaged in the seventeenth century, and has been depicted so since then.



Veendijk 43

I have not been able to track down the significance (if any) of the heraldry on the postbox: even the helpful staff at Tubbergen library were stumped.

Continue along the track to reach Veendijk, where turn right.

5

Veendijk to Tubbergen Hardenbergerweg 4.99km

Follow Veendijk for about 100m, then leave the road just beyond Leningsbeekweg, turning left onto a path which runs parallel to Mosbeek. This path is sinuous: follow it through its many twists and turns, passing a pond on your right, until it emerges onto an asphalt road at a curious lifting-beam stile.

Mosbeek near Veendijk 43

Here, turn left. At the T-junction, turn right onto Iemscheweg, then first left onto Elsweg.

From this point into Tubbergen, there have been changes to the route in some places since the mapping and route-description in the guide-book were laid down.

Continue along Elsweg, crossing a sandy track (do not turn right here, as indicated in the guide-book), and passing a house on the left, to reach the busy Denekamperweg. Turn right along Denekamperweg, then after about 200m, turn left onto Kupersweg, a sandy track. Follow Kupersweg to its end, where it comes out onto Uelserweg at a bus stop.

Turn right along Uelserweg, and follow it into the suburbs of Tubbergen for about 700m, passing another bus stop on the way. You will have passed a street called Harp before you reach the bus stop, but it is the second coming of Harp, beyond the bus stop, which is of interest.

Cross the end of Harp, and follow the concrete





Tubbergen

path along its left-hand side (that is, on the other side of the street from the houses): about half-way along the bend to the right, take a path down to the left, then right, then left. The path is now running alongside a stream.

After 200m, a road comes up from the left: here bear right, cross the stream, and then turn left to pick up a south-westerly direction. Keep the buildings of De Eeshof estate on your right as the path curls right, then left. Eventually, come out along Eeshoflaan (westwards) to reach Hardenbergerweg.

The Twentepad goes straight over here onto Huyerenseweg. To the left, 250m away, is the Julianastraat bus stop, the most central in Tubbergen (served, naturally, by the 64 route). The town centre and VVV lie across the junction, along Grotestraat.

Tubbergen is a town of more than 20000 people: its proximity to Almelo has made it a favoured dormitory. There is a busy town centre with all the usual facilities.

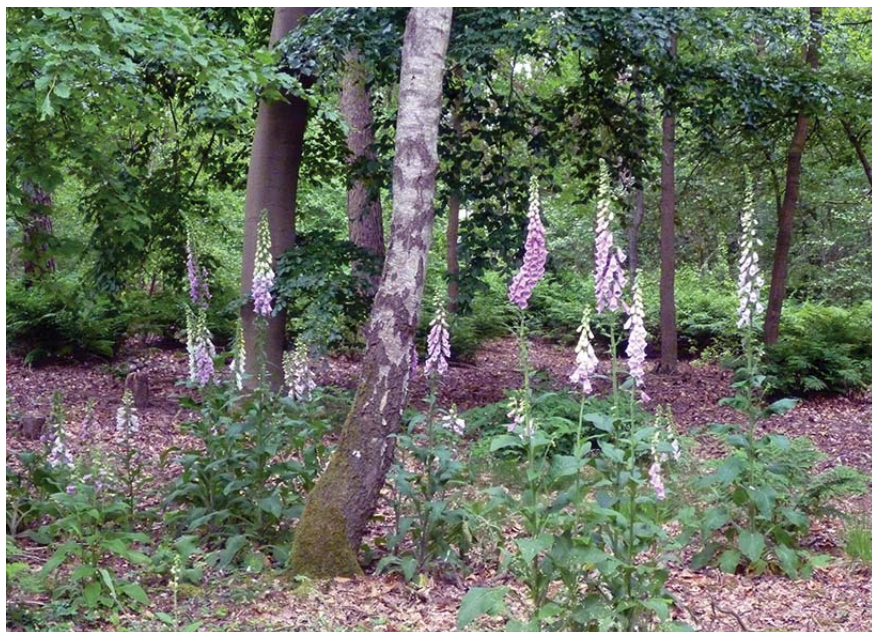
As with Ootmarsum and Oldenzaal, the historic centre is by-passed by the public transport services; moreover, cars are well relegated to parking facilities away from the

market area and the church square: pedestrians (and cyclists, of course) rule the roost here.

4

Tubbergen Hardenbergerweg to Hunzebeek 4.25km

Foxgloves on Vickersweg



From the end of Eeshoflaan at Hardenbergerweg, continue along Huyerenseweg for about 400m. Take the foot/cycle path on the right to cross the main road by a tunnel.

As the path rises to regain ground level at the far end of the tunnel, bear back on yourself left, then swing round to the right, parallel with the main road.

Do not join the main road, but follow a sandy track (Esweg) bearing slightly right, up towards a copse of trees. Pass the copse which forms a backdrop for the huge (and frankly terrifying) statue of Dr Schaepman on your left, to come out on a bend of Almelseweg.

Turn right, westwards (with your back to Dr Schaepman) past allotments, along a sandy track. After about 350m, turn right up the driveway towards a set of farm buildings (Erve Dreteler). Turn left at the buildings to follow a track (Veldweg) to its end at a T-junction.

Turn left on a broad sandy track, and follow it through a bend to the right, and then to the left. Take the first track to the right (Vikkersweg). Follow this for 1.5km to its junction with Hunzeweg. Turn right, then take a path which goes off to the left through the woods to reach Hunzebeek.

3 Hunzebeek to Mariaparochie 3.63km

Turn left on reaching the stream, to follow the waterside path with the stream on your right. After 800m, come out onto a sandy track (Rundervoortsweg) at a bridge. Do not cross the bridge, but go left for 100m, then right onto Achterlandsweg.

At the end of Achterlandsweg, turn right along the busy N746. Cross the road just before you reach the bridge, and continue on the path with the stream (Markgraven) on your right. This path crosses Hagweg and Markgravenweg to emerge eventually onto the N349 close to its junction with the N746. Cross the N349, turn right, and cross the bridge over Markgraven.



The terrifying statue of Dr Schaepman, Tubbergen

2 Mariaparochie to Gravenalleebrug 6.08km

Once over the bridge, turn left off the N349 onto a grassy path with the stream (Markgraven) now on your left. After about 1200m (and round two major bends), you will come to a broad canal: turn left over the bridge to keep the water on your right. Pass a bridge over this canal, and follow the path to the left, to the junction with another canal (Kanaal Almelo-Nordhorn).

Follow this canal (water still on your right) for 1.2km to reach a bridge at the road called Gravendijk. Turn right and cross the bridge. Ignore the canalside road which goes off to the right; follow Gravendijk round the bend to the right: Gravenallee, the entrance drive to Huize Almelo (over 3km long) is straight ahead.

Take the left-hand turn onto Broekzijdeweg. After 100m, turn right onto a woodland path. This comes out onto a dirt track (Fliersweg), where turn left. After 300m, turn right at the crossing of tracks onto Boershuisweg, bearing right at the farm to rejoin Gravenallee. Turn left, and after 400m, pass an old tollhouse on your right. A further 1km brings you to Gravenalleebrug, the bridge over the Lateraalkanaal.



Toll tariff, Gravenallee
Almelo church



This completes the Twentepad circuit: all that is left is to retrace your steps on the Almelo spur, back to the station.

1

Gravenalleebrug to Almelo 2.91km

Cross Gravenalleebrug and continue to the main road. Turn left past a car park, then right to cross the main road at the lights. Continue straight ahead onto Hofstraat, then after 100m, turn right onto a brick path.

If you have already walked round the north side of Huize Almelo (perhaps on your way out of Almelo), you may continue straight ahead along Hofstraat (past a deer enclosure and ornamental lake on your right), into Schouwburgplein, and past the theatre to reach the bookshop at the entrance to the pedestrian area, where continue straight on into Koornmarkt.

Carry straight on across the frontage of Huize Almelo, turning left at the end to follow its north wall. At the end of the wall, bear half-left along Herengracht past a row of houses to reach Kerkplein. Pass the west end of the church, and turn left into a small street (Het Kolkje) which winds its way to and along the moat on its left-hand side. Come out onto a street by a bookshop, and turn right into the pedestrian area of central Almelo. Turn right and cross Koornmarkt into Grotestraat, to keep Het Wetshuys tavern (Oude Radhuis) on your right.

Look out for a narrow lane leading off to the left between shops: take this into Centrumplein. Bear slightly right to the corner of the square, and continue westwards. Pass on your left the building with the giant poppy adorning its spiral staircase, and keep going until the Haven is on your left. Go straight ahead, exiting the pedestrian area. Continue in the same direction along Haven Noord Zijde, past the Stadhuis on the far side of the Haven, until you reach the dual carriageway. Turn left here, along Egbert Gorterstraat, to reach Stationsplein at the far end. Cross and bear right to the station entrance (or to the bus station beyond).